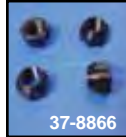
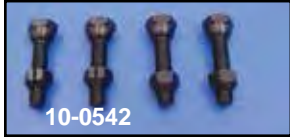




**Lightning Tappet Assemblies.**  
Complete units precision machined and drilled for early motors. Holes allow better lubrication in valve train. Screws included. Fits 1957-85.

VT No.	Size
10-0514	Standard
10-0515	.005
10-0527	.010



**Tappet Adjusting Screws and Nuts.**

VT No.	Qty	Year	Item
10-0542	Kit	1957-85	
10-0517	4 pack	1957-85	Screw
12-0523	10 pack	1936-52	Split Nuts
8780-4	4 pack	1936-52	Split Nuts



**Replacement Nuts** fit each brand of pushrods or tappets.

8780-4	Colony	5/16 - 24	4 pack
37-8866	V-Twin	5/16 - 32	4 pack
12-0524	Eastern	5/32 - 32	10 pack



**Solid Tappet**



**Big Axle Standard**

**Solid Tappet Assemblies** include roller assembly installed. Jims does not include adjuster screws or nuts where necessary. Jims available with Big Axle Roller Assembly. Fit 1957-85.

**Big Axle**

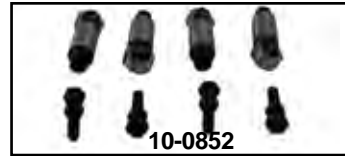
Jims	Eastern	Size
10-0632	10-0502	Standard
10-0633	10-0503	.005
—	10-0524	.010
—	10-0451	.015
—	10-0452	.020



**Tappet Roller Repair Kit** includes 4 pins and 4 roller assemblies for 1957-85 XL.

VT No.	Brand
10-0520	V-Twin
12-1179	Pins Only, 10 pack
10-0934	Big Axle

# Tappet Assembly for 1957-85



**Sifton Solid Tappet Assembly Sets of 4**, feature centrifugal surface fine grinding and max-axle precision fit rollers and pins. Solid units include adjuster screws & lock nuts. Fit 1957-85.

VT No.	Size
10-0784*	Standard *Note: Does not include adjuster screw and nuts.
10-0852	Standard
10-0774	.005
10-0775	.010



**Solid Lifter Kit** includes four standard tappets with adjusters and four lifter blocks.  
**VT No. 10-0474**

## 1986-up



**Jims Big Axle Tappet Assemblies** include roller assembly installed. Sold each.

VT No.	Size	Fits/Type
1986-90		
10-0657	Standard	Hydro Solid
10-0658	.002	Hydro Solid
1991-99		
10-8276	Standard	Power Glide
10-1803	Standard	Hydro Solid
10-8282	.005	Power Glide
2000-up		
10-1806	Standard	Power Glide
10-0568	Standard	Power Glide II
10-0571	.005	Power Glide II
10-1811	.010	Power Glide II
10-0569	Standard	Hydro Solid

**V-Twin Replacement Tappets** for 1991-up models.

VT No.	Size	U/M
Fits 1991-99		
10-8277	Standard	Each
Fits 2000-up		
10-0820	Standard	Each
10-0824	Standard	Set of 4



**11-9544**



**Evolution Solid Tappets** can only be used with adjustable pushrods. Jims brand sold each. Sifton™ sold in set of 4.

Jims	Sifton™	Size	Years/Fits
10-0636	10-8256	Standard	1986-90
10-0637	10-8257	.005	As Above
—	10-8258	.010	As Above
10-8370	10-8376	Standard	1991-up

**Pushrod Sets for Above.**  
11-9544 1991-03



**Tappet Roller Repair Kit** includes 4 pins and 4 roller assemblies.

VT No.	Year/Model	Brand
10-2534	1986-99 Evolution XL	V-Twin
10-0529	1986-99 Evolution XL	Crane



**Evolution Hy-Rev™ Hydraulic** by V-Thunder features a unique anti-pump up race retainer, designed to replace the normal clip so as to precisely limit travel of the plunger during operation, this allows the valve train to perform more like a mechanical stem allowing higher RPM operation with quiet and precision of hydraulics. Fits 1991-99. Standard size.

VT No.	U/M
10-8280	Each
10-8281	4



**V-Thunder Tappet Set of 4.**  
**VT No. 10-7391**



**Crane Hydraulic Roller Tappet** provides improved RPM capability, superior reliability and quieter operation. Features include use of a precision, hardened ball-type valve to provide superior sealing and lash control. A rotating check ball prevents localized wear and pitting. Fits 1999-up. **VT No. 10-2200**