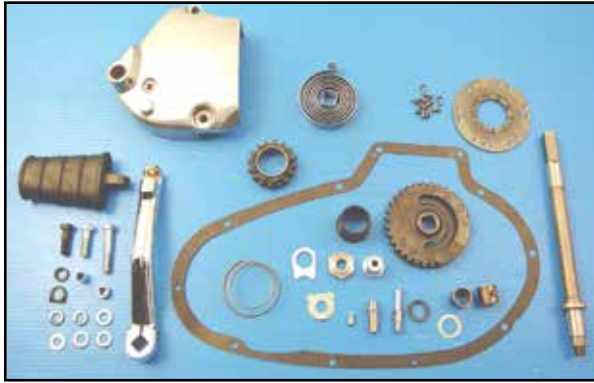




# 1952-79 XLH Kick Starter Conversion



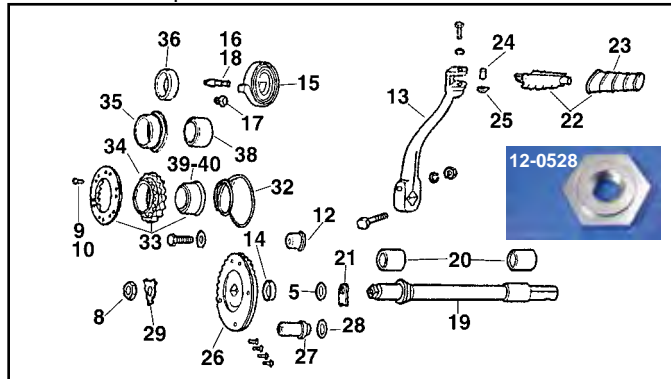
**XLH Complete Kick Starter Kits.** All parts included as illustrated. Check ratchet gear spacing before assembly. Available in kick only sprocket cover or kick and electric sprocket cover with cut away for start-er motor. Available with chrome or polished sprocket cover.

**V-Twin Original Since 1980!**

VT No.	Years	Type	Finish
22-0211	1973-76	Kick only	Chrome
22-0205	1977-78	Kick and Electric	Polish
22-0210	1977-78	As Above with Cover	Chrome
22-0206	1977-78	Kick only	Polish
22-0207	1979-only	Kick and Electric	Polish
22-0215	1986-90	Kit	Chrome

**Note:** 1980-up Cases are not machined from factory to accept kick starter components and can not be fitted with a kick starter.

VT No.	Years	Type	Finish
22-1050	1952-70	Kick only	Polish
22-0200	1967-70	Kick and Electric	Polish
22-0201	1971-72	Kick and Electric	Polish
22-0202	1971-72	Kick only	Polish
22-0203	1973-76	Kick and Electric	Polish
22-0209	1973-76	As Above with Cover	Chrome
22-0204	1973-76	Kick only	Polish



### Kicker Starter Hardware for 1954-79 Sportster.

VT No.	#	OEM	Years	Item
12-0709	5	6802	All	.007 Shim
12-0528	8	7926	All	Shaft Nut
17-1111	9	8215	1957-70	Rivet, 25 pack
17-1112	10	8216	1971-up	Rivet, 25 pack
17-9844	12	24577-68	1968-up	Hole Plug
17-0018	13	33052-71	All	Kick Arm
14-0115	14	33076-37	All	Oil Seal
13-0122	15	33084-41	All	Chrome Spring
17-0155	16	33088-52	1952-70	Spring Stud Zinc
17-0156	18	33088-71	1971-79	Spring Stud Chrome
17-1114	19	33094-57	1957-76	Kicker Shaft
17-1115		33094-77A	1977-79	Kicker Shaft
10-0718	20	33099-52A	All	Bushing Shaft
10-0719	20	As Above with seal		
17-1113	21	33110-54	All	Thrust Plate
17-0301	22	33175-16B	All	Kick Pedal
28-0213	23	33182-63A	All	Black Rubber
10-2494	24	33213-31	All	Pedal Bushing
13-9184	25	33215-30	All	Spring Washer
17-1106	26	33348-57	1957-77	Large Kick Gear
17-1107		33348-77	1978-79	Large Kick Gear
17-9833	27	33356-52	All	Gear Stop
37-9239	28	6469	All	Washer for Above
17-0911	29	33362-52	All	Lock Tab
17-1116	30	33379-57	1957-70	Ratchet Plate 9T
17-1109	31	33379-71A	1971-79	Ratchet Plate 9T
13-0127	32	33390-52	All	Ratchet Spring
17-1103	33	Cpt. Kit	1954-70	Ratchet Gear Kit
17-1104	33	Cpt. Kit	1971-72	Ratchet Gear Kit
17-1105	33	Cpt. Kit	1973-79	Ratchet Gear Kit
17-0998	34	33432-73	1973-79	Ratchet Gear 9T
10-0722	35	33442-57	57-E73	Bushing
10-0723	36	33442-73	L73-79	Bushing
17-1101	38	37753-76	1957-70	Spacer XLH, electric start only
17-1100*	39	37754-74	1957-72	Spacer 1.047 long
17-1102*	40	37755-73	1971-79	Spacer 1.153

**\*Note:** For kick and electric start.



**XLCH Ratchet Gear Kit.** Includes gear, plate, rivets, machined spacer and spring for appropriate year. Spacer supplied as noted.

VT No.	Year	Spacer
17-1103	1954-70	17-1100
17-1104	1971-72	17-1100
17-1105	1971-79	17-1102



**Ratchet Plate Riveting Fixture and Alignment Tool** clamps plate to drum while setting rivets on 1971-79 XL clutch drum.  
**VT No 16-0165**



17-1116



17-1109



17-1108

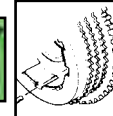
**Starter Ratchet Plates** available with 9 teeth. Both mesh with starter gear.

VT No.	OEM	Year
17-1116*	33379-57	1957-70
17-1109	33379-71A	1971-79
17-1108*	33379-71A	1971-79
17-1191	3379-57	18 Tooth



17-1191

**\*Note:** Machined type



**Ratchet Plate Rivets.** Two lengths  $\frac{5}{32} \times 1\frac{3}{16} \times \frac{9}{32}$  dia (8215) use on 1957-70 XLCH and  $\frac{5}{32} \times \frac{7}{16} \times \frac{9}{32}$  dia (8216) use on 1971-79 XLCH. 25 pk.

VT No.	OEM	Type
17-1111	8215	Early
17-1112	8216	Late