



# Shifter Lever



**Chrome Shifter Lever Assemblies** include cats paw shifter peg. 21-0571 has smooth bore.

VT No.	Year	VT No.	Year
21-0571	1957-70	21-0575	1977-85
21-0572	1957-70	21-0576	1986-90
21-0573	1971-74	21-0577	1991-2003
21-0574	1975-76	21-0579	2004-up



**Shifter Lever** fits 1991-up 5-Speed.  
**VT No.** **Year**  
 21-0550 1991-2003  
 21-0387 2004-up  
 21-0590 1991-2003  
 Black with highlighted aluminum

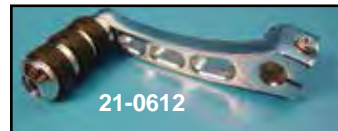


**Chrome Shifter Levers. Note:** 21-2013 & 21-0301 have smooth bore. (A) type requires use of long stud shifter footpeg as hole is not threaded.

VT No.	#	Year
21-2013	A	1952-70
21-0310	A	1952-70
21-0301	B	1971-74
21-0314	B	1971-74
21-2034	C	1975-76
21-0304	D	1977-85
21-2012	E	1986-90
21-0643	E	1986-90
21-2032	F	1991-03
21-0578	H	2004-up



**Heel to Toe**  
 21-0584 2004-up  
 21-0823 1991-03



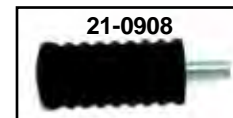
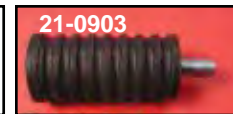
**Chrome Billet Shifter Lever and Footpeg Kit** includes arm and cats paw shifter footpeg.

**VT No.** **Year**  
 21-0612 1991-03  
 21-0614 2004-up

## Shifter Pegs



**Chrome Diamond Shape Shifter Peg** includes diamond shape rubber insert and short stud (1/2").  
**VT No.** 21-0260



**Stock Rubber Shifter Pegs** are in long or short stud. The 7/8" long stud is used when the lever is unthreaded and stud accepts a nut. Short 5/8" thread screws into lever.

VT No.	Color	Type
21-0901	Black	Short 1/2"
21-0902	White	Short 5/8"
21-0903	Black	Long 7/8"
21-0908	Black	Long 7/8"
21-0904	White	Long 7/8"



**Shifter Footpegs** are the short stud type.

VT No.	#	Type
27-1633	A	Railer
21-2025	B	Cats Paw
21-1665	C	Cats Paw, extended
21-0407	E	Chrome Cap
21-0640	F	O-Ring (Rotates)
21-0402	F	O-Ring
21-0872		Skull Shifter