



# Driver Footpeg Support



27-1624



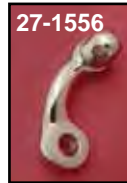
27-1735

**Driver Peg Support Bars** are the splined type, less pegs fit 1952-74. Replaces 50948-71 left, 50949-67 right. Use with large female type driver pegs.

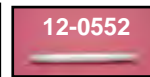
VT No.	Finish
27-1624	Zinc
27-1735	Chrome



**Chrome Forward Control Footrest Support** fits XLC models with forward controls. VT No. 27-0010



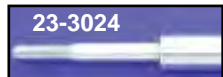
27-1556



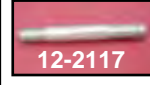
12-0552



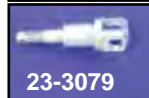
27-0044



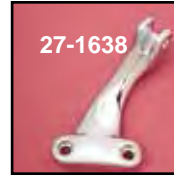
23-3024



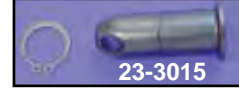
12-2117



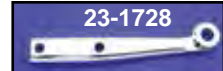
23-3079



27-1638



23-3015



23-1728



23-0780



23-3080

## Foot Rest Supports and Studs.

VT No. OEM Years Item

### Left Side

27-1556	50948-75	1977-85	Support
12-0552	24752-75	1977-85	Stud
27-1638	50951-90	1991-03	Support
27-0817	42972-04	2004-up	Support

### Right Side

23-3024	34886-86A	1986-90	Stud
27-1577	50949-75	1977-79	Support
12-2117	247751-75	1977-79	Stud
23-3079	42441-90A	1991-03	Peg Clevis
23-3015*	42441-80	1980-90	Pivot-Stud
23-0780	42971-04	2004-up	Support
23-1728	34909-83	1983-90	MC Support Bracket
23-3080	34909-90	1991-03	MC Support Bracket

\*Note: Acts as foot support brake pivot.



27-1577

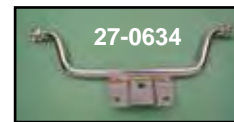
# Rear Peg Mounts



**Passenger Peg Mount Bracket Sets Only.** Use with male style peg.  
**Chrome Black** Years  
 27-1564 — 2004-13  
 27-0825 27-0271 2014-up



27-0633



27-0634



27-0631



A 27-1686



B 27-1685



D 27-1687



C 27-1561

**Rear Passenger Peg Mounts (D)** Replaces 50610-86 on 1986-2003 models, to mount rear passenger pegs to swing arm. Choose pegs to complete or order kit.

VT No.	#	Item
27-1686	C-A	Kit
27-1685	C-B	Kit
27-1687	C-D	Kit
27-1561	C	Mounts Only



**Rear Passenger Peg Relocation Bracket Set** fits 2004-13 XL with 30-0300 pipe set. Black finish. Order chrome footrest for support bracket separately.

VT No. 31-0766



VT No. 27-0634 Shown on motorcycle



**Chrome Rear Footpeg Brackets** bolts to rear motor mount bolts, for use on Rigid or Swing Arm frames.

VT No.	Fits
27-0633	1957-78 Sportster, uses large female Driver pegs 27-1215, 27-1220 and 27-1581
27-0634	1982-90 XL use 27-1227 Small Male Pegs
27-0631	1957-81 except 1979 use 27-1227 Small Male Pegs

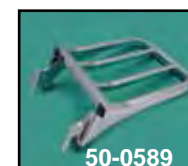
# Luggage Rack



**Chrome Sissy Bar Luggage Rack** of solid steel fits all 16" tall sissy bars, unique design for easy installation or removal. Mount holes are 2 $\frac{5}{8}$ " center to center and 5 $\frac{1}{4}$ " wide. May require drilling for some applications.  
 VT No. 50-1011



**Chrome Eagle Spirit** is a 3 $\frac{1}{2}$ " universal medallion, adhesive backed. VT No. 42-0532



50-0589



50-0847



50-0841

**Bolt On Luggage Racks** mount to rigid side straps of sissy bar on 2004-up XL models.

VT No.	Model
50-0589	Rack
50-0847	Side Plate
50-0841	Sissy Bar Top