

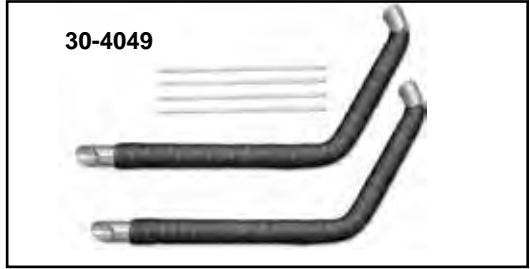
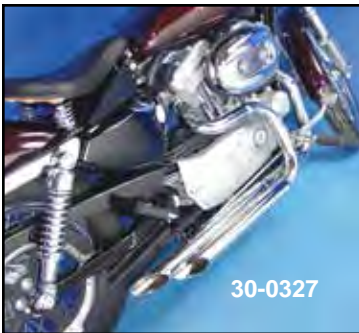


2004-up Exhaust Pipe



2004-up XL Side by Side Pipes fit XL and XLC models with forward controls. Pipes are 1³/₄" at head and 2¹/₄" at end and includes brackets and baffle set. 2007-up has provisions for oxygen sensors. Sensors may be capped by 30-0423 if desired.

VT No.	Type	Year
30-0477	Straight	2007-up
30-0324	Straight	2004-06
30-0327	Slash	2004-06
30-0380	Slash	2007-up
30-0423	Oxygen Sensor Plugs	2007-up



Black Heat Wrapped Drag Pipe Sets for XL's.
VT No. Year
30-4049 1986-03



Oxygen Sensor Units sold each.
Fits 2007-up
VT No. Fits
30-0434 2007-13
30-0490 2014-up front
30-0491 2014-up rear

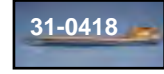


Namz O2 Enrichment Device.
Recommended for bikes with high flow air cleaner performance exhaust systems. Reduces engine operating temperature between 20 to 30 degrees. Simply plug in between oxygen sensors and wiring harness. Works with stock ECM. Fits 2007-up XL. Sold in sets. VT No. 32-6556



2¹/₄" Drag Pipe Set features built in mount tabs to bolt to stock bracket. Chrome replacement bracket and baffle set available separately. Fits 1986-2003 XL models.

VT No.	Item	Type
30-0342	Pipes	Down Slash
30-0385	Pipes	Side Slash
31-0418	Bracket	
30-0050	Baffle Ring	



Billet End Tips fit 1³/₄" straight cut drags.
VT No. Finish
30-0796 Chrome
30-0797 Black



Caution: These exhaust products are not legal for sale or use in California on pollution controlled vehicles. These products are intended for the experienced rider only.



Limited Warranty. Exhaust Products distributed by Tedd Cycle Inc. are warranted against defects in material and workmanship, which include fitting and finish quality at the time of installation only. Claims regarding discoloration, peeling blistering or blued chrome will not be considered as defective material or workmanship and cannot be returned as such as per manufacturers warranty.

XL