



Motor Mount for XLH



31-0591



31-0629



31-2137

Chrome Top Motor Mount for 1986-2003.

VT No. Year OEM

31-0591 1986-94 16278-86A

31-0629 1995-03 16278-95B

42-0027 1986-94 Top Center Mount Cover



Chrome Motor Mounts for Late 1984-2003 Evolution XL.

VT No. Item

31-2137 Front Mount Set

9772-22 Allen As Above

1986-03 Bolt Sets

8871-13 Acorn Center

9773-8 Acorn, Cylinder Head



Chrome Finned Coil Cover fits coils on top motor mount, as on FXR or custom applications.

VT No. 42-0962



Horn Mount Bracket replaces 69135-04.

Fits 2004-up XL.

VT No. 31-0299

1982-03

Chrome 1986-2003 XL Billet Top Motor Mount accepts coil bracket, horn.
VT No. 31-0713



31-0410



9967-4

Chrome Top Front Mount replaces 16214-86, 1986-2003 Evolution XL 883-1100-1200 models.

VT No. Item

31-0410 Mount

9967-4 Bolt Kit



Chrome Teardrop Coil Cover fits top motor mounts with 2 holes such as 31-0664. Includes key switch hole.

VT No. 42-0926



31-0848



31-0849



31-0850

Front Isolator Mount Kit.

VT No. Item

31-0848 2004-16

31-0849 2004-13

31-0850 2014-16

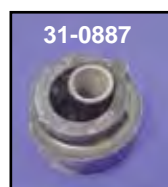
2004-up Motor Mounts



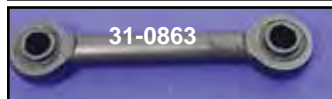
31-0715



31-0882



31-0887



31-0863



31-0884



31-0862



31-1273



31-0881



31-1280

Chrome Allen Bolt Set fits 2004-up motor mounts.
VT No. 2228-16

Motor Mounts for 2004-up.

31-0715 Mount

31-0863 Tie Rod

31-1273 Tie Rod, Chrome

31-0862 Center Mount

31-0881 Tie Link Mount Bracket

31-0882 Rear Iso

31-0883 Pivot

31-0884 Rear Mount

31-0887 Front Iso

31-1280 Front Mount