

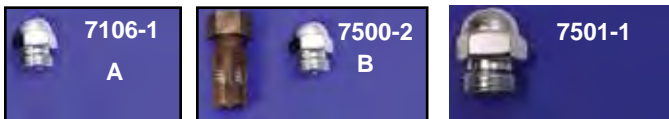


# Ignition and Points Cover for XL



1971-03	2004-up		42-0748	Chrome Flame
42-0090	42-0106	Chrome Live to Ride	42-5522	Chrome Flame
42-0087	42-0088	Gold Live to Ride	42-0065	Chrome Flame with Black Skull
42-0035	42-0035	Chrome V-Tech	42-1078	Chrome with Skull
42-0299	42-0299	Chrome Domed	42-1110	Chrome Perforated
42-0662	42-0662	Chrome Flat	42-1115	Black Ball Milled
42-1535		Chrome Flame Mesh Design	42-0155	Chrome Smooth
42-0638		Chrome Finned	42-1058	Chrome Milled Skull
42-0084	42-0081	Chrome Skull	42-1116	Black Smooth
42-0582		Black Chrome Skull	42-1125	Black Perforated
42-0960	42-0960	Chrome Maltese	42-1122	Black with Alloy Flames
42-6100	42-6100	Chrome Raised Maltese	42-1095	Chrome Ball Milled
42-0561	42-0560	Black with Chrome Raised Skull	42-0581	Black with Chrome Skull
	42-1261	Chrome with Chrome Skull	42-0474	Chrome Flame
	42-1262	Chrome with Black Skull	42-0475	Black Flame
	42-1383	Chrome Air Flow	42-0189	Black Smooth
	42-1384	Black Air Flow	42-0198	Chrome Smooth
42-0162	42-0162	Chrome Maltese Spinner	42-0465	Chrome Flames with black mesh
42-1524	42-0464	Chrome with Black Mesh Skull	15-1032	1970-03
42-0956	42-0956	Chrome Hidden Mounting	15-1033	1980-up
	42-1176	Chrome Skull with Chain	8764-2	1970-78 Allen
42-1146	42-1148	Chrome Grooved	8765-2	1978-up Allen
42-1147	42-1166	Black Grooved	8402-2	1978-up Chrome Acorn
			2219-2	2004-up

## Timing Plugs



**Timing Plugs.** Note Stock is 5/8" - 18 thread, Oversize is 11/16" - 16.

**A.** Acorn style plug fits all Sportster models timing plug holes and oil tanks.

**VT No. 7106-1**

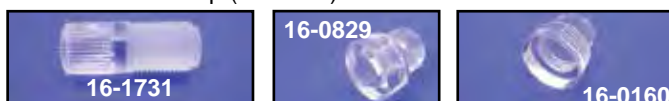
**B.** Acorn style plug with oversize thread and one tap for rethreading stripped out timing hole. Fits all timing holes.

**VT No. Type**

**7500-2** Plug and Tap (Oversize)

**7501-1** Plug Only (Oversize)

**9407-1** 11/16"-16 Tap (Oversize)



**Clear Timing Plugs** are available as a long optically clear type or a short standard version with or without the internal hex.

**VT No. Item**

**16-1731** Long Type

**16-0829** Hex Type

**16-0099** Standard, 10 pack

**16-0160** Standard, each



**C. Stock Type Timing Plug for 1936-69** in chrome or cadmium finish.

**VT No. Finish**

**8114-1** Chrome

**8115-1** Cadmium

**9404-1** Cadmium (Oversize)

**9304-1** Chrome (Oversize)

**D.** Functional and custom design plug fits all Sportster timing plug holes and oil tanks.

**8610-1** Chrome

**8611-1** Cadmium



**E.** Allen style plug use on all 1970-up replaces 720.

**9402-1** Chrome

**9403-1** Cadmium

**37-9206** Chrome by Gardner-Wescott

**9960-1** Chrome (Oversize)