



Ignition Switches



32-9053

Barrel Key Ignition Switch features round style keys. Two position activation with positive detent to retain key in the off position. Fits 1973-94. Run position with lights off.
VT No. 32-9053



32-0161



32-0416



32-1099



32-0175



32-1100



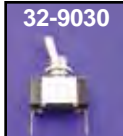
32-1267

Chrome Stock Key Switch for ignition and light switch for Sportster, replaces 71425-77 & 70124-75. Includes two keys and mounting ring.

VT No.	Type	Year
32-0161	Replica	1977-98
32-0416	Stock Type	1977-98
32-1099	As Above	Cam Lock
32-0175	Replica	1973-76
32-1100	As Above	Cam Lock
32-1267	Off/On	Start



32-0423



32-9030

Universal Toggle Switches.
VT No. Type
32-0423 On/off w/leads
32-9030 Spotlamp On/off w/o leads

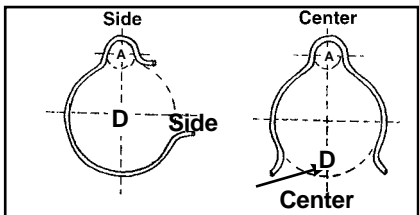
Warranty
 All Electrical Components sold as individual pieces or in kits are covered under our warranty "Replacement Only" Provision. All electrical related item part numbers begin with a 32 prefix. No credit issued for these items as they are exchange only.



SHRINK TUBING

Shrink Wrap Tubing. Cut to length, thread the wires, carefully apply heat and watch the insulation shrink to a perfectly fit around the wires. Easy to use.

VT No.	Inner Diameter	Length
32-0124	1/4"	4'
32-0125	3/8"	4'
32-8039	5/8"	4'



37-8679

Control Cable and Wire Clamps are zinc plated spring steel, packs of 10.

VT No.	D-Tube Size	A-Wire Size	"D" is the diameter of the tube it fits. "A" is the size wire/loom that is secures.
37-8677	1" Side	3/16" - 7/32"	
37-8678	1 1/4" Side	3/16" - 7/32"	
37-8679	1" Center	3/16" - 7/32"	
37-8680	1" Center	5/16"	
37-8681	1 1/8" Center	5/16"	



Chrome Handlebar Wiring Clips snap into handlebars with holes at bends, 10 pk.
VT No. OEM Size, Inner Diameter
36-0613 56073-83 3/8"
36-0614 70345-84 1/2"



42-0648



42-0935

Chrome Ignition Switch Cover fits 1995-up models. Includes decal.
VT No. Years
42-0648 1995-2003
42-0935 2004-2013



Chrome Switch Cover fits 1972-87 models.
VT No. 42-0330



32-0415



32-0478

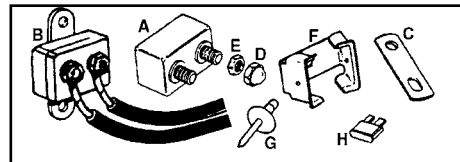


32-0479

Universal Key Switch includes mounting ring and two keys.

VT No.	Type
32-0415	On-Off-On
32-0478	Off-On-Start
32-0479	Off-On-On
32-0420	Off-On-On
32-1236	Lock/Key

Circuit Breaker



32-0436



32-0414



32-0412



37-9069



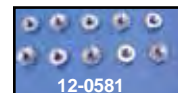
32-8922



32-8921



31-9952



12-0581



31-9964



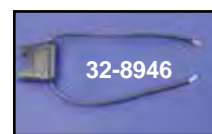
32-8945



32-0413

Circuit Breaker are stock replacements.

VT No.	#	OEM	Amp	Fits
32-0414	A	74589-73	15	1973-up
32-0413	A	74599-77B	30	1978-up
32-0412	B	74594-71	20	1971-72 XL
32-0436	H	74587-94	15	1994-96
32-9207	A	74600-94	50	1994-up
32-8921	C	74598-73		Connector Bar, each
32-8922		69999-77		Connector Bar, each
32-8945		7/8" C/C		Connector Bar, pair
37-9069	D	7602		Nylon Nut, 10/32", 25 pack,
12-0581	E	7629		Nut, 10 pack
31-9952	F	9952		Mount Clip, 10 pack secures breaker or flasher to fender
31-9964	G	8672		Rivet for Above



32-8946



32-0410

In-Line Fuse Holder has 6" long wire leads.
VT No. Type
32-0410 Fuse
32-8946 ATC Type

XL