



Keihin and CV Idle Screw allows for easier adjustment by hand.
VT No. 35-0220

VT No. 35-0220 Installed



Keihin Carburetor Fitting replaces 27371-76, 90°, plastic, each.
VT No. 40-0534



Accelerator Pump Kit improves throttle response on 1979-88 type Keihin carburetor models with a greater volume of fuel from the pump circuit.
VT No. 35-9050

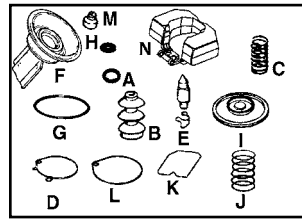


High Flow Fuel Inlet replaces broken fuel inlet to the carburetor bowl for modified motors. Fits all Keihin carburetors (Butterfly and CV) 1976-up XL.
VT No. 35-0134



Keihin Adjustable Main Jet. Fully adjustable for maximum tuning efficiency. As pictured.
VT No. 35-0369

Keihin



35-0230

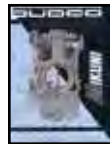
Keihin Carburetor Parts and Accessories

VT No.	#	OEM	Item
14-0921	A	27121-89	Float Valve O-ring 1989-up CV
35-0110	B	27311-76	Pump Cap, 10 pack
14-0566		27312-76	Float Bowl Screw O-ring, 1976-77
13-9234	C	27314-76	Throttle Stop Screw Spring
14-0560	D	27324-83	Float Bowl O-ring 1983-91 CV, 5pk
35-9067	E	27337-76	Float Valve with clip
		27338-76	
35-0230	F	27585-88	Vacuum Piston
14-0559	G	27358-76	Float Bowl O-ring 1976-78
35-9066	I	27361-76	Pump Diaphragm
13-9168		27362-76	Diaphragm Spring
14-0564	K	27577-88	Float Bowl O-ring 1989-91 CV
14-0937	K	27577-92	Float Bowl O-ring 1992-up CV
14-0557	L	27889-78	Float Bowl O-ring 1978-82
14-0679	M	27385-76	Low Speed Jet Plug 1976-up
13-9212		27123-89	Accelerator Rod Spring 1989-up
13-9169		27136-81	Throttle & Idle Adj. Screw Spring, 1981-up
13-9213		27162-89	Vacuum Piston Spring, 1989-up
13-9179		27315-88	Primary Starter Spring, 1988-up
13-9181		27319-76	Low Speed Adjuster Screw Spring, 1981-up
13-9183		27322-76	Throttle Lever Spring, 1981-up
13-9178		27584-88	Primary Vacuum Spring, 1988-up
35-9196	N	27576-92	Float 40 mm CV 1992-up

Mikuni Carburetor



Mikuni Carburetor Kits 38mm for all XL. Includes air cleaner, carburetor, manifold adapter, hose clamps, main and pilot jet assortment and throttle cable. Fits 1957-up.



Mikuni Carburetor Parts and Information Manual.
VT No. 48-0671

VT No.	Item
35-0010	Complete Kit
34-0567	Air Cleaner
36-0105	Cable
35-0071	Throttle Handle



Mikuni HSR 42 Easy Kits. These kits are designed to work with stock intake manifold, choke cable, air cleaner and throttle cables.

VT No.	Fits
35-9320	1994-2006
35-9115	1971-1985



Carburetor Rebuild Kit for Mikuni carburetor includes flow fuel hose, throttle valve seal, float bowl seal o-ring, and carburetor top gasket. Custom application for HSR-42/HSR-45 carburetors. **VT No. 35-0821**

Jets



Keihin Low Speed Jets fit 1976-89 Keihin carburetors, except CV.

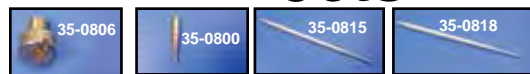
VT No.	OEM	MM
35-0297	27896-79	.65
35-0294	27894-78	.68
35-0296	27897-78	.72
35-0295	27382-77	.75
35-0299	27348-77	.88
35-0298	27348-76	1.00



Keihin Main Jets.

VT No.	OEM	MM
35-0357	27419-76	1.65
35-0358	27418-76	1.70
35-0359	27417-76	1.75
35-0361	27416-76	1.80

Jets



Mikuni HS and HSR Jets.

Pilot Jets		Main Jets		Main Jets	
VT No.	Size	VT No.	Size	VT No.	Size
35-0800	22.5	35-0806	150.0	35-0812	165.0
35-0801	25.0	35-0807	152.5	35-0814	170.0
35-0802	27.5	35-0808	155.0		
35-0803	30.0	35-0809	157.5		
—		35-0810	160.0		
35-0805	35.0	35-0811	162.5		
HSR-42 Jet Needles		HSR-45 Jet Needles			
VT No.	Size	VT No.	Size		
35-0815	95	35-0818	95		
35-0816	96	35-0819	96		
35-0817	97	35-0820	97		