



# 1 1/4" Buffalo Handlebar

## 1 1/4" Buffalo Ape Hangers.

FXST	Rise	Grips
25-0714	12"	36"
25-0682	13"	36"
25-0715	14"	36"
—	15"	36"
25-0716	16"	36"
25-0656	18"	37"
25-0717	20"	37"



**1 1/4" Chrome Knucklebars** are pre-drilled for internal wiring. Feature 30" width with a 4.5" pullback. Fits custom springer front end applications.  
VT No. 25-0230

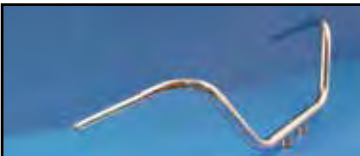


**1 1/4" Buffalo Bars** fit 1988-up FXST models, featuring 36" width, 1.5" rise 14" center width and a 12.5" pullback.  
VT No. 25-0577



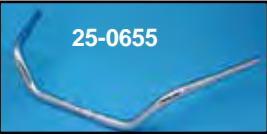
## Dresser Buffalo Bars.

VT No.	Width	Height	Pull Back
25-0690	38"	5"	10 1/4"
25-0693	35"	6 1/2"	10 1/2"



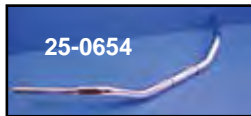
**Dresser Style Bar** with indents features 1 1/4" diameter with 34.5" width, 2" rise and 11" pull back with 1/2"-20 threads.

VT No. 25-0651



**Buffalo FL Style Dresser Bar** features 4" end riser, 14" pullback and 12" center width with grips at 35" wide. Designed for tall riders.

VT No. 25-0655



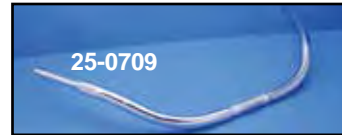
**Buffalo Bars** are 1 1/4" outside diameter with low profile. Drag style.

VT No. 25-0654



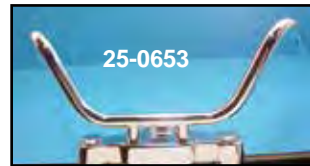
**1 1/4" Bikini Beach Bars** are 36" wide with 3.5" rise with 8" at the center.

VT No. 25-0699



**1 1/4" Beach Bars** are pre-drilled for internal wiring. The shape provides comfort with control. Use with stock risers and clamps.

VT No. Type  
25-0709 FLST  
25-0710 FXSTS



**1 1/4" Flat Track Bar** feature 30" width and 14.5" pull back with built in 3" riser with 1/2 - 20 thread.  
VT No. 25-0653

## Black Bars



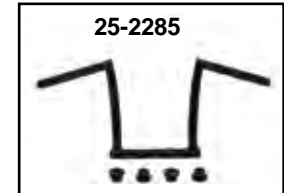
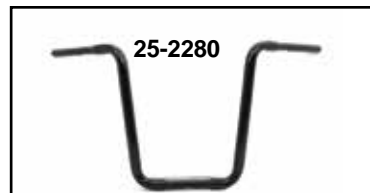
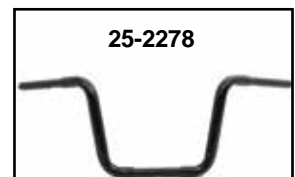
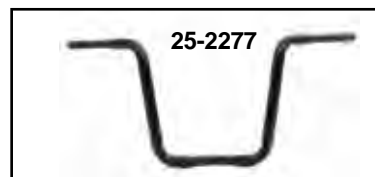
### 1 1/4" T-Bar

VT No.	Rise	Finish
25-1134	6"	Chrome
25-1135	8"	Chrome
25-1140	8"	Black



### Black T- Bars.

VT No.	Rise
25-2279	10"
25-2281	6"



**Black Bars.** \*Note: Throttle by wire

VT No.	Rise	Type
25-2275	15"	Z-Bar
25-2276	15"	Z-Bar, 2" knurled spacing and indents
25-2277*	14"	Narrow Body Ape Hanger
25-2278*	11"	Narrow Body Ape Hanger
25-2280*	17"	Narrow Body Ape Hanger
25-2285*	11"	Z-Bar