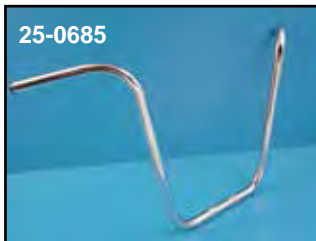




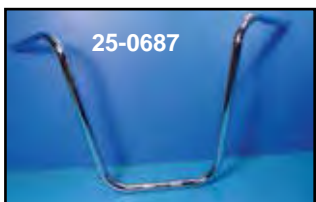
1" Handlebar



25-0685



25-0672



25-0687

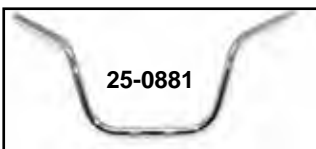


25-0671

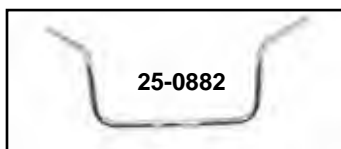
Chrome Ape Hangers are made of heavy steel tubing.

Note: All 1982-up Ape Hangers come with indents.

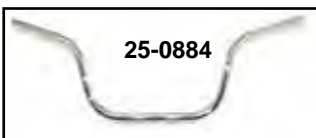
Pre-82	1982-up	Rise
25-0532	25-0713	8"
25-0533	25-2146	10"
25-0534	25-0671	12"
25-0529	25-0576	14"
25-0672	25-0673	15"
25-0684	25-0686	16"
25-0685	25-0687	18"
25-0855	25-0856	20"



25-0881



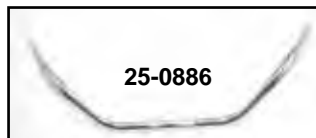
25-0882



25-0884



25-0885



25-0886



25-0887

Handlebars for 1982-up Big Twin, XLH

VT No. Style

- 25-0881 FL Style
- 25-0882 Glide
- 25-0884 Mid Rise
- 25-0885 Mid Rise
- 25-0886 Cruise
- 25-0887 Police



25-1833



25-1836



25-1833

Vintage Bars.

VT No. Description

- 25-1832 Shorty Bar, F/XL, FX, ST
- 25-1833 Bar, 7.5" H, F/XL, FX, ST
- 25-1834 Bar, 7.5" H, F/Springer
- 25-1836 Bar, 12" H, F/XL, FX, ST



Heritage Style Bars indented and pre-drilled for hidden wiring, 32" wide, 6" rise, 10" pullback with 13" center width. 1" diameter.

VT No. 25-2149



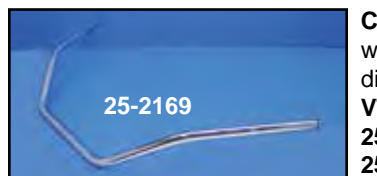
Chrome Mini-Buckhorns are a modified scaled down look and size of the original 70's buckhorn. 1" diameter.

VT No. 25-0542



Two Piece Bars. Original Buckhorn type, knurled to fit stock riser block on 1960-78 FL, 1" diameter on both ends enables snap throttle to be used.

VT No. 25-0663

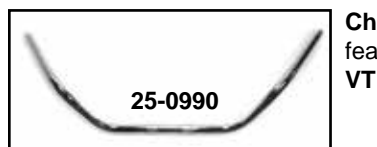


25-2169

Chrome Beach Bars are 39" wide at grip with a 5" rise. 1" diameter.

VT No. Type

- 25-2169 With indents
- 25-2170 Without indents



25-0990

Chrome Speeder 1" Bars feature knurled center.

VT No. 25-0990



25-0408

Police Bars are the wide style 33" across with 4" rise FL tour bar 12" across riser mount; excellent for dog bone or flanders style risers. The 1982-up is available with indents. 1" diameter.

VT No. Type

- 25-0399 Pre 1982
- 25-0408 1982-up w/indents



Narrow Ape Hangers.

VT No. Size

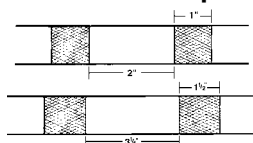
- 25-0951 13"
- 25-0952 15"



Stainless Handlebars with knurl replaces 56083-74 on FX models 1974-81. Stock Pre-1982. 1" diameter.

VT No. 25-0416

For the Complete Listings, Measurements and Photos



Note: Handlebars include knurls with 2" spacing except FXSTS type which have 3/4" spacing.