

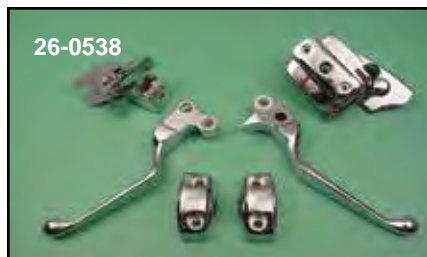


Control Dress Kit



Dress Kit with switch housings fits 1996-05 FXST, FLST, 1996-03 XL models. with single disc.

VT No. 26-0546



1996-up Chrome Control Dress Up Kit includes clutch lever bracket, handlebar control clamps, master cylinder top and body cover with levers and hardware for disc models as noted.

VT No.	Year	Model	Disc
26-0538	1996-03	XL	Single
	1996-05	FXST-FLST	Single
	1996-05	FXD	
26-0549	1996-03	XL	Dual
	1996-05	FXST-FLST	Dual
	1996-05	FXD	



32-1667



32-1668

Extended Turn Signal Caps.

Chrome Black Fits

32-1666 32-1667 2012-up FXD, 2011-up FXST, FLST

32-1668 32-1669 1996-up XL, 1996-2013 FL, 1996-11 FXD



26-0115



26-0116

Chrome Adjustable Lever Set. Features hidden adjustment screw that allows the lever to be moved in closer to handlebar controls.

26-0115 1996-12 BT

26-0116 2004-12 XL

26-0117 2008-up FLT



Standard Backlit LED Handlebar Switches and Wiring Harness without switch housing. LED is amber and wires are 60" in length.

VT No. Models

32-1135 2007-up FXST-FXD

32-1272 1996-06 FXST-FXD

32-1273 1996-06 FXST-FXD



26-0580

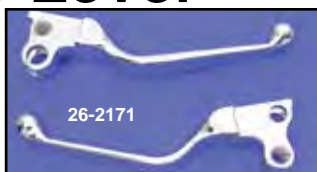
Chrome Power Wide Lever Sets replace stock levers on 1972-81.

VT No. 26-0580

1972-95 Lever



26-2170



26-2171



26-2162

Chrome Contour Levers designed for easy grip, pairs.

VT No. Year

26-2170 1972-81

26-2171 1982-95

26-2162 1982-95 Polished

26-2110 1982-95



26-1975



26-1974

Chrome Soft Pad Hand Levers feature a comfortable rubber insert $\frac{3}{8}$ " thick locked into a tongue-and-groove channel.

VT No Fits

26-1975 1982-95

26-1974 1972-81



26-0527



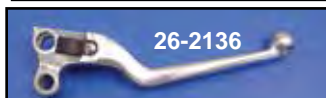
26-0528



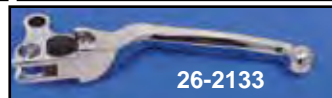
26-0519



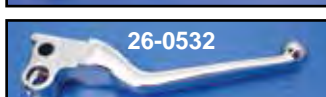
26-0531



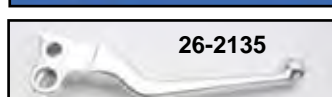
26-2136



26-2133



26-0532



26-2135

Clutch and Brake Levers are available in polished or chrome. Sold individually.

Chrome	Polish	OEM	Years	Type
26-0527	26-0528	45016-72	1972-81	Brake
	26-0517	Power	1972-81	Brake
	26-0519	Power	1972-81	Brake
26-0531	26-2136	45017-82	1982-95	Clutch
26-2133		45017-88	1988-95	Clutch
26-0532		45016-82	1982-95	Brake
	26-2135	45016-82	1982-95	Brake