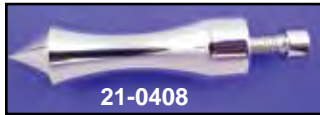
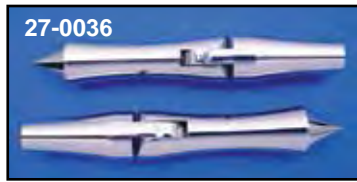




Footpegs



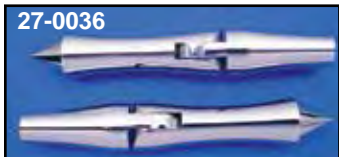
Pirate Spike Footpeg Set features full billet construction for male type application.

VT No.	Item	Type	Length
27-0035	Peg Set	Male	6"
27-0036	Peg Set	Folding	8.5"
27-0069	Peg Set	Folding	6.5"
21-0408	Shift		3.25"



Clamp On Footpeg Sets. Chrome plated peg with zinc clamps and hardware, features the folding type mount block,

VT No.	Style	VT No.	Style
27-1214	Holes	27-1212	Spoon
27-1211	Diamond	27-1213	Ribbed



Folding Billet Footpeg Set feature 3" clevis for use on Wyatt Gatling forward controls. Order shift peg separately.

VT No.	Style	Shift Peg
27-0036	Pirate	21-0408
27-0602	Batigue	21-0540



Chrome Steel Stock Style Footpegs for front engine bars.

VT No.	OEM	Size	Clamps
27-1504	49100-58	1"	27-1505
27-1503	49102-73	1 1/4"	27-1506
27-0847	Male Peg Set		



Chrome Billet Slugger Footpeg Sets feature rubber inlay on male style pegs.

VT No.	Style
27-0935	Bar
27-0936	Diamond
27-0937	Rib
27-0997	Oval
27-0938	Shifter, Bar
27-0939	Shifter, Diamond



Chrome Billet Chopper Footpegs feature LED lamps built in.

VT No.	Color
27-0656	Amber
27-0657	Red



Folding Chrome Hex Chopper Footpegs include threaded mount block.

VT No.
27-0176



Rubber Insert Footpegs.

VT No.	Type
27-0979	Clamp
27-0981	Male
27-0982	Male with clevis mount rotated 30°
27-1524	Clevis Only



Authentic Chopper Footpegs feature original sand cast finish with mounting blocks. Thread is 7/16" x 20.

VT No.	Type	Brand
27-1501	7/16" x 20	Anderson
27-1507	Peg with Clamp	V-Twin



Footpeg Yokes for steel dimpled pegs.

VT No.	Type
27-0746	Male
27-1524	5/8" Bar
27-1454	3/8" x 24