



# Spotlamp Bracket



31-0183



31-9915



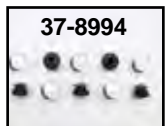
31-0424



31-0462



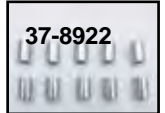
31-4013



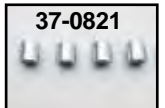
37-8994



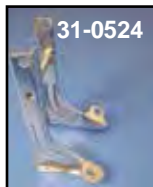
31-1175



37-8922



37-0821



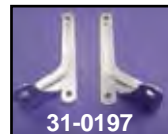
31-0524



31-0182



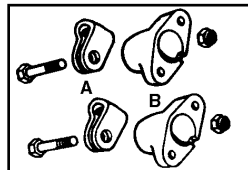
31-0196



31-0197

**Spotlamp Bracket Sets** include right and left sides for front fork triple tree mounting.

Chrome	Black	Fits
31-0524	31-1013	1949-59 FL
31-0182	31-1014	1949-84 FLH
37-8793		1949-84 FLH Mounting Hardware
31-0196		1971-84 FX
31-0197		1957-85 XL



**FLH Turn Lamp Chrome Mounting Kit** for turn signal lights 1968 and later, has chrome base, clamp and mounting bolt. Replaces 68518-68. Necessary for mounting turn signal below Spotlamp unit

VT No.	#	Item
31-0180	A and B	Complete Kit
31-3974	A	Clamps only, pair
31-0266	B	Stantions only



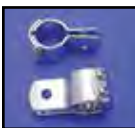
**Tapered Washers** will allow alignment of spotlamp base to bracket.

VT No.	OEM	Use	U/M
37-8832	67815-59A	Headlamp, FX	5
37-8833*	68721-62	Spotlamp block	2
37-8903*	68720-62	Spotlamp clamp	5

\*Note: One of each used on BT Spotlamp 1962-up.



**Chrome Universal Spotlamp Mounting Bracket Set** clamps to 1" frame rail or engine bar. VT No. 31-0185



**Spotlamp Mount Clamp** will fit 1 1/4" tubing. VT No. 27-0037

**Chrome Spotlamp Mount Bracket** is one piece type.

Use VT No. 33-0010 Spotlamp.

VT No.	Fits
31-0183	1949-84 FLH
37-8994	Hole Plugs for Above
31-0424	1949-84 FLH
31-4013	1986-01 FLST-FLSTF-FLSTN Does not fit FLSTS
31-1175	2002-up FLST-FLSTF
37-1424	Hardware for 31-1175
37-8922	Spacers for Above, 10 pack
31-9915*	1980-84 FXWG, 1984-up FXST
37-0821	Spacer for Above
31-0462	1988-96 FXSTS
31-0549	Clamps for 1997-up FLSTS
31-0550	Spacers for 1997-up FLSTS

\*Note: Includes brackets which mount to lower pinch bolts.