



Fuel Clamp



Chrome Econo-Seal Hose Ends act as clamp and finished end when stainless jacket rubber hose is cut. Micro clamp is hidden under chrome end.

Smooth	Hex	Fits	Qty
40-0222	40-0213	1/4"	6
40-0248	—	5/16"	6
40-0223	40-0214	3/8"	6
40-0224	40-0218	1/4"	2
40-0249	—	5/16"	2
40-0225	40-0219	3/8"	2
—	40-0220	1 3/16" inner diameter	1
—	40-0591	15mm	2
—	40-0592	17mm	2



Chrome Oil Line Fitting Set allow use of 3/8" braided steel lines. Built in compression fitting so no need for clamps. Reusable three piece set.

VT No.	Size	Fits
40-0575	1/2" NPT Thread	TC-88
40-0583	1/8" NPT Thread	Early
40-0584	1/4" NPT Thread	TC-88



Radii Polished Stainless Steel Hose Lock is a compression fitting that replaces conventional hose clamps. Feature a cleaner appearance and superior sealing performance. *Note: Fits S&S Super "E" carburetor fitting

Pair	Each	Size	Pair	Each	Size
35-0180	35-0175	1/4"	35-0183*		5/16"
35-0181		5/16"	35-0182		3/8"

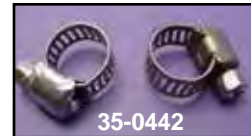


Oil Fuel Line Clamp Assortment includes pliers. Refill for clamps as noted by Oetiker#.

VT No.	Oetiker No.
16-0080	Service Kit
16-0083	Pliers only
16-0062	16700995
16-0084	16700999
16-0081	15500003
16-0085	15500009
16-0053	16701009



Oil and Gas Hose Pliers.
VT No. 16-0000

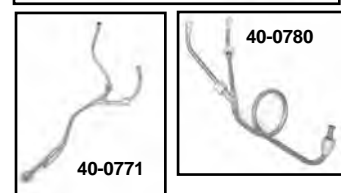
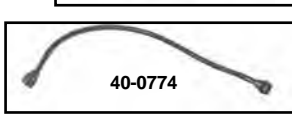
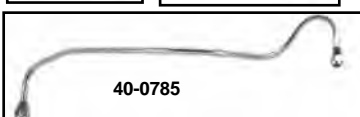
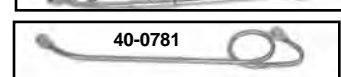
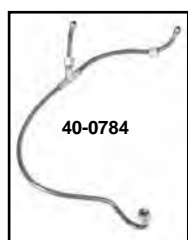


Stainless Hose Clamps are available in Worm Gear type, Nickel Spring type, Torro drive type. Torro drive clamps feature pressed tooth and raised band edges to prevent damage to hose. Available in two sizes and sold in packs.

Stainless Worm Gear	Nickel Spring	Size	Line
35-0442	35-8036	1/4"	Fuel
35-0413	—	7/32"- 5/8"	Fuel
35-8031	—	5/8"	Oil
—	35-8037	3/8"	
—	35-8038	5/16"	



Vintage Steel Fuel Line



1936-47 OHV Fuel Lines finished in tin plate as original, unless noted as chrome.

VT No.	OEM	Year/Type
40-0783	3607-36	1936-38 (Y)
40-0784	3607-39	1939 (Y)
40-0785	3607-40	1940-41
40-0774	3607-41A	1942-49
40-0788	As Above	Chrome
40-0775	62352-50	1950-65
40-0789	As Above	Chrome
40-0903	62361-50	Fuel Line Nut, Cadmium
14-0530	62360-50	Fuel Line Rubber Sleeve fit 1950-65

Steel Fuel Lines fit tank to carburetor, tin or chrome finish.

VT No.	OEM	Fits
40-0771	3606-32	1930-36 VL (Y)
40-0778	3607-37A	1937-38 WL
40-0772	3607-41M	1942-49 WL, GE
40-0786	As Above	Chrome WL, GE
40-0773	62354-50	1950-65 WL, 1953-65 GE
40-0787	As Above	Chrome WL, 1953-65 GE
40-0779	3607-37	1937-38 UL (Y)
40-0780	3608-39	1939 UL
40-0781	3608-40	1940-41 UL
40-0782	3608-42	1942-48 UL
Crossover (Tank to Tank)		
40-0776	62355-40	1940-47
40-0905	As Above	Chrome
40-0906	62355-48	1948
40-0907	62355-48A	1949-56
40-0777	62355-48B	1957-65
38-0203	As Above	Chrome