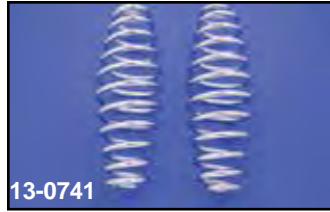
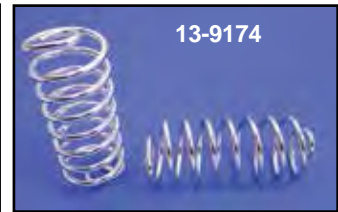
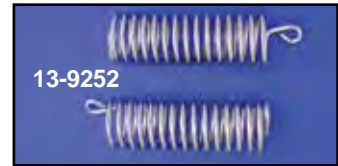
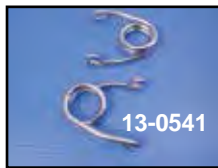
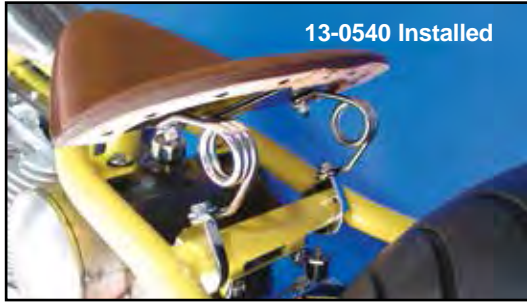
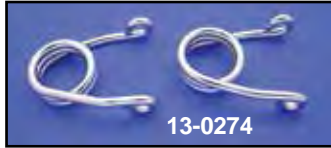




Seat Springs



Chrome Seat Springs are original tapered barrel style in 2", 3" or 5" height. The 5" and 7" have a heavy duty 6.5 mm wire diameter for stable support.

Chrome Torsion Type Seat Spring Set.

Standard	L & R	Size	Type
13-0273	13-0985	2"	Regular
	13-0276	2"	Brass
13-0274	13-0986	2"	Heavy
13-0541	13-0988	3"	Heavy
13-0540	13-0987	3.5"	Heavy
13-0542		4"	Heavy
13-0546		5"	Heavy
13-0852		2"	Heavy

Order various length spring sets as required for height change.

VT No.	Size
13-0742	1"
13-9236	2"
42-0033	3"
13-9243	4"
42-0055	5", 6.5 mm wire

13-0548	5", 6.5 mm wire, tapered
13-9174*	5"
13-0741	7"
13-9252	7", 5.5 mm wire

*Note: Feature 5.71 mm wire.

Rear Spring Mount



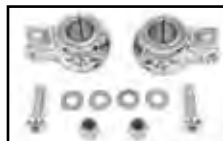
Mount Clamp Sets will mount springs to frame cross tube.

VT No	Size	VT No	Size
31-0695	1"	31-0697	1 1/4"
31-0696	1 1/8"	31-0698	1 3/8"



Weld On Spring Mounts contour to frame rails, raw.

VT No. 31-0342



Chrome Seat Shock Mount Clamp Set fit 1" bars to mount seat shock sets.

VT No.	Item
27-1008	Dual
31-0014	Universal

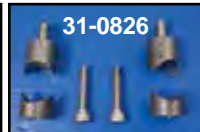


Weld On Seat Mount Brackets, sold in pairs.

VT No.	Type
31-0048	Spring Perch Set
31-0056	Universal Weld On Bracket Set



Weld-On Frame Seat Spring Mount be welded to Rigid frame cross tube to mount solo seat springs. VT No. 51-0638



Solo Seat Mount Stanchions are bolt on design to fit 1" frame tubes on rigid frames.

VT No.	Finish
31-0898	Chrome
31-0826	Raw
31-0907	Chrome



1" Solo Seat Coil Spring Mounting Stanchion Set can be screwed on seat mounting bracket. Also works when installing solo seats on dresser models. Includes two 1" tall bungs with 5/16 -18 x 1" allen screws and two locking pins.



VT No. 31-4087
Solo Seat Mount Stud Set has 5/16 x 24 thread at each end. VT No. 37-0957