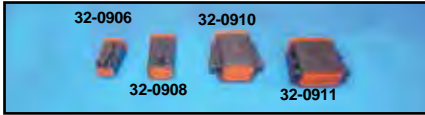




Electrical Connector



Pin Housings, each.		
# of Pins	OEM	VT No.
8	72108-94	32-0904
12	72109-94	32-0905



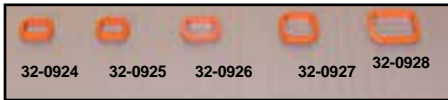
Socket Housings, each.		
# of Pins	OEM	VT No.
2	72112-94	32-0906
4	72114-94	32-0908
8	72118-94	32-0910
12	72119-94	32-0911



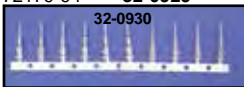
Pin Housing Locks, 10 pack.		
# of Pins	OEM	VT No.
2	72142-94	32-0912
3	72143-94	32-0913
4	72144-94	32-0914
6	72146-94	32-0915
8	72148-94	32-0916
12	72149-94	32-0917



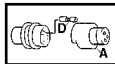
Socket Housing Locks, 10 pack.		
# of Pins	OEM	VT No.
2	72152-94	32-0918
4	72154-94	32-0920



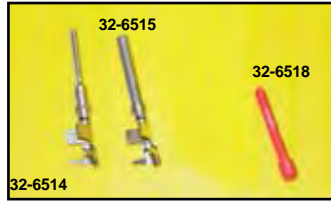
Deutsch Seal Rings		
Seal Rings, 10 pack.		
# of Pins	OEM	VT No.
2	72172-94	32-0924
3	72173-94	32-0925
4	72174-94	32-0926
6	72176-94	32-0927
8	72178-94	32-0928
12	72179-94	32-0929



Pin and Socket, 10 pack.		
Item	OEM	VT No.
Pin	72190-94	32-0930
Socket	72191-94	32-0931
Pin	72990-01	32-7438
Socket	72991-01	32-7437



Regulator Connector Fittings.		
VT No.	# OEM	Item
32-9092	A 72051-77	Regulator Plug
32-9090	D 74539-77A	Regulator Connector Socket



Deutsch	OEM#	VT No.	U/M
Pin	74190-98	32-6514	10
Socket	74191-98	32-6515	10
Pin blank	74195-98	32-6518	10



Pin Housing	OEM	VT No.	U/M
2	74102-98BK	32-6519	1
3	74103-98BK	32-6537	1
4	74104-98BK	32-6520	1
6	74106-98BK	32-6538	1
8	74108-98BK	32-6521	1
12	74109-98BK	32-6522	1



Socket Housing	OEM	VT No.	U/M
2	74112-98BK	32-6523	1
3 (Kit)	74113-98BK	32-6539	1
4	74114-98BK	32-6524	1
6 (Kit)	74106-98BK	32-6538	1
6 (Kit)	74116-98BK	32-6540	1
8	74118-98BK	32-6525	1
12	74119-98BK	32-6526	1



Pin lock	OEM#	VT No.	U/M
2	74142-98	32-6527	1
4	74144-98	32-6528	1
12	74149-98	32-6530	1



Socket lock	OEM	VT No.	U/M
2	74152-98	32-6531	1
4	74154-98	32-6532	1
8	74158-98	32-6533	10
12	74159-98	32-6534	1

Socket Housing replaces 4 socket for alternators. 72614-01. Black. Each.

VT No. 32-7438



Fuel gauge
2 Pin housing 72902-01BK 32-6535 2

Namz O2 Enrichment Device. Recommended for bikes with high flow air cleaner performance exhaust systems. Reduces engine operating temperature between 20 to 30 degrees. Simply plug in between oxygen sensors and wiring harness. Works with stock ECM. Sold in sets.

VT No.	Fits
32-6533	2007-08 FLT, 2007-11 FXST, FLST
32-6554	As Above with Stage 1 Kit installed
32-6555	2010-up FLT, 2012-up FXST, FLST with Stage 1

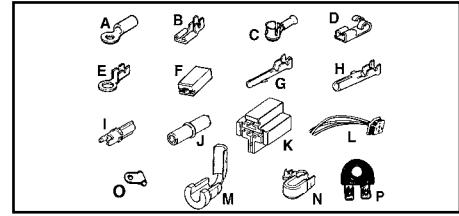
Replacement Fuses for stock custom applications.

VT No.	Amps	Replacement OEM	Type
32-6561	1	72300-89	ATO
32-6562	3	72301-89	ATO
32-6563	5	72302-94	ATO
32-6564	10	72340-94	ATO
32-6565	15	72347-94	ATO
32-6566	40	72314-01	Maxi
32-6577		ATO Sealed Fuse Holder with leads	



Deutsch Terminal Crimping Tool is designed to correctly crimp Deutsch Connectors. Replaces 39965. VT No. 16-1295

Wire Terminals

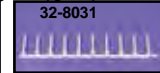


Ring Type Terminals.

VT No.	#	OEM	U/M Item	Gauge
32-8015	A	9856	25 #6 eye	16-22
32-8016	A	9871	25 #6 eye	14-16
32-8017	A	9857	25 #10 eye	16-22
32-8018	A	9902	25 #10 eye	14-16
32-8019	A	9866	25 #10 eye	10-12
32-8020	A	9858	25 1/4" eye	16-22
32-8021	A	9862	25 1/4" eye	14-16
32-8022	A	9863	25 5/16" eye	14-16
32-8023	E	9945	25 5/16" eye	10-16
32-8101	A	9859	25 3/8" eye	16-22
32-8102	A	9864	25 3/8" eye	14-16
32-8103	A	9868	25 3/8" eye	10-12
32-8104	A	9892	25 5/16" eye	14-16

Flag Type Terminals

32-8025	B	9904	10 1/8" Female Spade
32-9303	C	9905	5 Big Twin Neutral Switch
32-8027	B	9914	10 1/4" Female Spade
32-8028	D	9925	10 1/4" Right Angle Female Spade
32-8026	B	9930	10 3/16" Female Spade
32-8029	F	71774-77	10 Female Spade Insulator
32-8024	O	9901	25 5/32" Flag
32-8100	P	32604-78	10 Coil Adapter
32-8106		9907	10 1/4" Spade Insulator 16-22 gauge
32-8107		9885	10 Spade Insulator 16-22 gauge



Amp Mate-N-Lock Pins and Sockets

32-8030	G	72039-71	10 Pin
32-8031	H	72038-71	10 Socket
32-8032	I	72043-71	10 Single Pin Insulator
32-8033	J	72044-71	10 Single Socket Insulator
32-8036	K	72046-79	1 Starter Relay Connection
32-8037	L	72047-71	1 Head Lamp Connection
32-9333	M	72501-74	1 Harness Bushing Straight
32-9334	N	72502-74	1 Harness Bushing Right Angle



Amp Mate-N-Lock Connector Blocks.

VT No.	OEM	Type
32-8032	72043-71	Single Pin Insulator, 10 pk
32-8033	72044-71	Single Socket Insulator, 10 pk
32-9095	72035-71	2 Pin Insulator
32-9094	72034-71	2 Pin Socket Insulator
32-6547	72036-71	3 Pin Socket Insulator
32-6548	72040-71	3 Pin Socket
32-6549	70292-89	4 Pin Socket Insulator
32-6550	70291-89	4 Pin Socket
32-8034	72041-71	6 Pin Insulator
32-8035	72037-71	6 Pin Socket Insulator
32-6551	70287-81A	8 Pin Socket Insulator
32-6552	70288-81A	8 Pin Socket
32-9097	70294-87	10 Pin Insulator
32-9096	70293-87	10 Pin Socket Insulator
32-9033	72276-74	12 Pin Insulator
32-9034	72278-74	12 Pin Socket Insulator



Amp 40 Series Connectors		
32-6542	2 Wire Plug	
32-6543	4 Wire Cap	
32-6544	4 Wire Cap Housing	