



# Wheel Truing Stand



**Wheel Truing Stand** includes 3/4" and 1" shafts.  
VT No. 16-1525

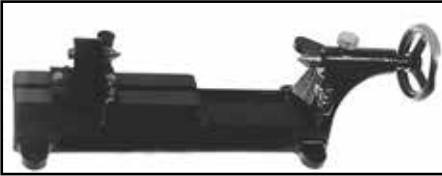


**Wheel Truing/Balancing Stand** includes tapered adapters and hub arbors.

VT No. Type  
16-0867 Full  
16-1272 Bearings for centering



**Professional Wheel Truing Stand** includes roller stations to facilitate flywheels or crank shafts.  
VT No. 16-0799



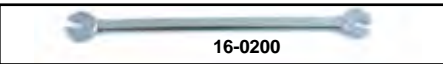
**Wheel Truing Fixture** of cast alloy construction. Adjustable width for all wheels, with or without axle in place. Order 16-0071 roller stanchions for use with flywheels and shafts or wheels with non-removable axle.

VT No. Item  
16-0586 Truing Machine  
16-0071 Roller Stanchions



**Spoke Wrenches.** Available as multi-fit 6 jaw type or 8 gauge forged.

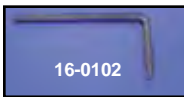
VT No. Type  
16-0164 6 Jaw  
16-0200 1-piece, 8 gauge, forged  
2693-1 Spoke Nipple Wrench, Parkerized  
2662-1 Spoke Nipple Wrench, Cadmium



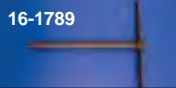
## Tire Tool



**Spoon Style Tire Iron.** 10 1/2" long.  
VT No. 16-0694



**Wheel Lug Allen Wrench** fits all front and rear wheels 1935-72 FL models.



VT No. Item  
16-0102 Lug Wrench  
16-1730 Drive Socket  
16-1789 "T" Lug Wrench

**FLT Wheel Lug Wrench** is a 3/8" hex key shaft which fits all 1982-up FLT models. Sold each.

VT No. 16-0996



**Mini Air Compressor** powered by cigarette lighter socket or connects to battery with cables supplied. Features a compact design to fit inside a saddlebag.

VT No. 16-1634



**Motion Pro Bead Popper** designed to break the bead on all types of motorcycle tires. Made of durable high impact plastic that will not scratch the wheel.

VT No. 16-0542



**Tire Changing Tools.** Breezer Tools makes tire changing a breeze by its patented design which lifts the bead without bending the rim. Instructions included, use in conjunction with the breezer iron. Valve fishing tool combines core driver and deflating pin with full length cable to facilitate working valve through rim hole.

VT No. Item  
16-0163 8 1/2" Forged Iron  
16-1764 15" Forged Iron  
16-0973 240 mm  
16-0066 Valve Fisher



**Tire Pressure and Temperature Monitor.** The tire pressure and temperature monitor tool requires a pressure range of 10-70 PSI and a temperature range of -22 degrees to 185 degrees F.

VT No. 16-9725



**Digital Tire Gauge.** 0-150 PSI.  
VT No. 16-0997



**Bead Breaker** is made of heavy duty cast iron.  
VT No. 16-1778



**Tire Bead Starter** is a safe way to start and seat beads on all tire sizes. The linked straps apply even seating pressure to tire beads

without compressed air. Tool is portable for on the go use and is simple and effective for even mounting a new 300 Series tire.

VT No. 16-9016

## Brake



**Brake Drum Turning Arbor** for all 5-bolt Big Twin brake drums. Replaces 97280-60A.  
VT No. 16-0122



**Brake Caliper Piston Remover** Tool to aid in removal of piston from 2000-up front and rear caliper assembly. Replaces 43293A.  
VT No. 16-0541



**One Man Brake Bleeder** includes tubing and canister and complete instructions.  
VT No. 16-1784



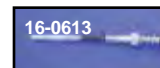
**Front Low Pressure Master Cylinder Bleeder Covers** will allow one person to bleed brake lines or to check system for leaks and can drain the entire system to replace brake fluid.

VT No. Year  
16-7319 1972-81  
16-7320 1982-95  
16-7322 1996-98



**Flex Hone for Rotor** designed to produce a swirl or cross hatch pattern with a non-directional finish which reduces friction induced breaking noise: medium grit. Designed for low speed operation using a 3/8" drill. Available for master cylinder bore.

VT No. Use  
16-0640 Rotor  
16-0785 5/8" Master Cylinder  
16-0786 1 1/4" Master Cylinder  
16-0787 3/4" Master Cylinder



**Brake Cylinder Hone.** 3/4" to 3"  
VT No. 16-0613



**Snap Ring Pliers** are specially designed with long reach fingers for use on master cylinders.  
VT No. 16-0788