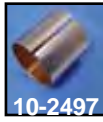




Bushing

10-2515	35316-41	Low Gear 45 Side Valve
10-2517	35320-41	Second Gear 45 Side Valve
10-0728	35322-38	38-58 Big Twin Mainshaft Third Gear
10-2516	35787-52	54-72 All XL's Countershaft 1st Gear
10-0752	35787-72	73-84 XL Countershaft 1st Gear
10-0729	35789-36	41-85 Big Twin 4-Spd Countershaft Low Gear
10-0730	35791-36	41-85 Big Twin 4-Spd Countershaft 2nd Gear
10-2547	36035-26	29-73 45" Countershaft Left
10-2490	36042-41	41-73 45" Countershaft Side Cover
17-9830	37436-36	36-84 Big Twin 4-Speed Mainshaft End Bushing
10-0753	37458 41	Clutch Gear 45 Side Valve
10-0751	37458-52	52-85 All XL Models Clutch Gear
10-0733	40520-63	77-up XL Shifter Shaft In Right Crankcase 66-up XL Shifter Shaft In Chain Cover
10-0740	41685-37	37-57 Big Twin Brake Backing Plate Cam
10-2496	—	Same as above .015 O/S
10-1256	42443-80	80-up XL Brake Pedal All
10-2497	47094-58	58-84 Big Twin Seat Post
8859-1	47581-29	29-73 45's Seat Post
7708-1	47583-36	36-57 Big Twin Seat Post
10-0741	47755-31	37-57 Big Twin Brake Crossover Shaft
10-2505	47757-52	75-78 XL Shifter Cross Shaft
10-2500	51925-37	52-78 XL Brake Cross Shaft
10-2501	51925-65	37-64 Big Twin Seat Tee
10-0743	60593-74	65-80 Big Twin Seat Tee
		74-85 FX 4-Speed Inner Primary Shifter



Shim



12-0704



Shims. Check list for proper applications.

VT No.	OEM	Fits
12-0700	6743	Armature .030 1930-57 Big Twin
12-0701	6743A	Armature .060 1930-57 Big Twin
12-0702	6750	Shifter Fork .005 1941-85 Big Twin 4-Speed
10-1257	6750	.007 As Above
12-0703	6752	Shifter Fork .015 1941-85 Big Twin 4-Speed
12-0711	6762B	Pushrod Cover 1941-up all Twins
12-0704	6767	Rocker Arm .005 1966-84 Big Twin Rocker Arm .005 1957-84 Sportster
12-0710	—	Same as above .007
12-0715	—	Same as above .015
12-0705	6769	Cam Shaft .007 #1, 3, and 4 Cams 1957-85 Sportster, 1932-73 Flathead
12-0706	6770	Same as above .005
12-0716	6771	Same as above .015
12-0717	6773	Camshaft .005 #2 Cam 1957-85 Sportster, all 1932-73 Flatheads
12-0718	6775	Same as above .010
12-1258	6778	Same as above .015
12-0709	6802	Starter Crank 1954-79 Sportster
12-0712	23741-55	Sprocket shaft bearing .003 1955-84 Big Twin
12-0713	—	As Above .003 1952-76 All XL
12-0714	—	As Above .003 1977-up All XL
12-0708	43560-35	Wheel Hub Shim .007 1935-66 Big Twin
12-9917	—	As Above .015
10-1259	35404-74	Shift Lever Shim .030 1977-up

VT No.	OEM	Item
10-2498	413-30	30-36 74" 80" Right Case
10-2519	416-30	30-36 74" 80" Left Case
10-8524	662-29	30-36 Big Twin and 45 Timer Shaft
10-8525	662-30	30-36 Big Twin and 45 Cam Gear Shaft
10-8526	662-34VL	34-36 Big Twin and 45 Oiler Drive Shaft
10-0700	17428-57	66-up Big Twin 57-up XL Rocker Arm 8 pack
10-0760	24331-36	57-up XL 29-73 45" Std Pstn Pin, pair
10-0762	—	As above .005 Oversize
10-0763	24332-36	As above .010 Oversize
10-0756	24334-36	36-99 Big Twin Std Piston Pin, pair
10-0757	—	As above .002 Oversize
10-0758	—	As above .005 Oversize
10-0759	24335-36	As above .010 Oversize
10-0703	24641-36	36-99 Big Twin Oil Pump Shaft
10-0704	25581-36	41-69 Big Twin Crankcase Cover Gear Standard
10-2524	—	Same as above .005 Oversize
10-0705	25581-70	70-99 Big Twin Crankcase Cover Gear Standard
10-2525	—	Same as above .005 Oversize
10-0706	25582-36	41-54 Big Twin Cover Pinion Shaft Standard
10-2526	—	Same as above .005 Oversize
10-0707	25582-54	54-72 Big Twin Gear Cover Pinion Shaft Standard
10-0708	25582-73	73-92 Big Twin Gear Cover Pinion Shaft
10-2529	—	As above .005 Oversize
10-8536	25582-93	93-up Big Twin Gear Cover Pinion Shaft Standard
10-8556	—	As above .005 Oversize
10-0709	25586-37	57-up XL Cam Gear #1, 3, 4 Cams Cam Cover Front In L Ex Cam 74/80 Side Valve, Front Exhaust Cam 45
10-2540	—	As above .005 Oversize
10-0731	25588-37	45" 74" 80" Cam Cover Rear Intake Cam Side Valve
10-0710	25588-57	57-90 XL Cam Gear #2 Cam Standard
10-2541	—	As above .005 Oversize
10-0711	—	57-90 XL Gear Kit #1-2-3-4 Standard
10-8538	25588-91	91-up XL Gear #2 Cam Standard
10-2507	25590-37	45" 74" 80" Cam Cover Rear EX Cam
10-2512	25591-37	74" 80" Pinion Shaft Side Valve Standard
10-2503	25593-37	Pinion Shaft 45 Side Valve Standard
10-0712	25593-57	57-76 XL Cam Cover Pinion Standard
10-2544	—	As above .005 Oversize
10-0713	25593-74	77-up XL Cover Pinion Standard
10-8268	25594-75	77-81 XL Brk Pedal Operating Shaft
10-2506	25595-37	Cover Front In Cam 45 Side Valve
10-8271	25595-52	52-56 K Exhaust Cam
10-0714	25597-36	36-54 Big Twin Crankcase Cam Gear Standard
10-2527	—	As above .005 Oversize
10-0715	25597-57	57-E84 XL Idler Gear Standard
10-2546	—	As above .005 Oversize
10-2552	25598-91	1991-up XL Inner Cam
10-2504	25599-37	74" 80" Side Valve Crankcase Cam Shaft
10-2495	25601-37A	45 Side Valve Crankcase Cam Sft Bush
10-0716	25785-30A	41-69 Big Twin Idler and Circuit Breaker Gear
10-0749	26431-76	77-90 XL Oil Pump Cover
10-0750	26489-75	77-90 XL Oil Pump Body
10-0742	27290-24	Linkert Throttle Shaft, pair
10-0717	32525-36A	36-39 Big Twin Circuit Breaker Housing
10-0718	33099-52A	56-69 XL Magneto Housing
10-0719	—	54-79 XL Kick Starter Shaft
10-2493	33101-32	54-79 XL Kick Starter Shaft with Seal
10-2494	33213-30	Kick Starter Shaft 45 Side Valve
10-0720	33288-37	Kicker Pedal All Twins
10-0721	33438-50	41-69 Big Twin Kick Start Shaft with Seal
10-2486	—	50-85 Big Twin Mainshaft Starter Gear 4-Speed with Stock Gear
10-0722	33442-57A	As above .005 Oversize for Aftermarket Gear
10-0723	33442-73	57-72 XL Starter Ratchet Gear
10-8527	33445-89	73-79 XL Starter Ratchet Gear
10-8528	33446-89	89-93 Big Twin Prim Housing Starter Shaft
10-2502	33638-52	89-93 Big Twin Prim Housing Starter Shaft
10-2511	33638-70	52-69 FL-FLH Foot Shift Bracket
10-8529	33713-85	70-85 FL-FLH All FXWG-FXST Foot Shift Bracket
10-0724	34037-52	87-up FLT Prim Housing Shifter Shaft
10-2483	34037-75	54-74 XL Shifter Shaft Shifter
10-2518	34427-38	77-85 XL Shaft In Chain Cover
10-0732	34430-36	75-76 XL Shift Pedal Shaft
10-2514	34432-38	(Small) Shifter Shaft 45 Side Valve
10-0725	34435-52	37-76 Big Twin Hand Shift Shifter Shaft (Large) Shifter Shaft 45 Side Valve
10-0726	34498-52	41-79 Big Twin Shifter Shaft
10-2488	34632-84B	52-79 Big Twin Pawl Carrier
10-0748	34898-79	84-up FXR All Shifter Shaft
10-0727	35094-65	78 only, All XL Brake Pivot Shaft
10-2487	—	65-85 4-Spd Big Twin Mainshaft Drive Gear As above for Andrews Gear only

